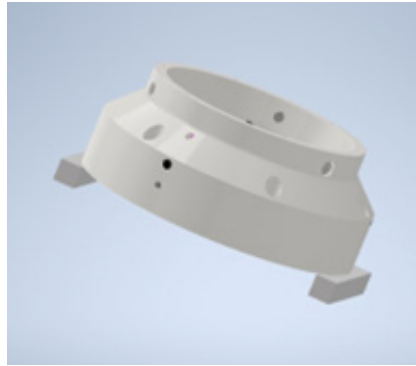
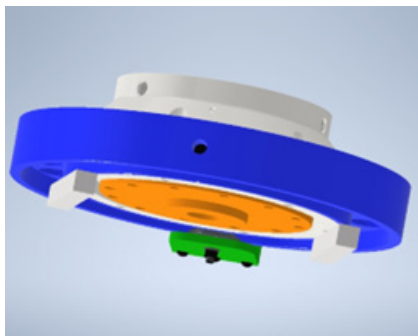


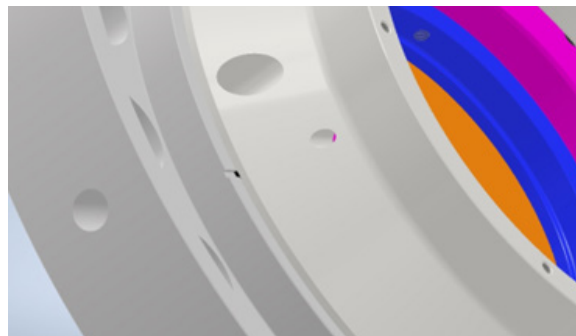
- 1) Remove chuck from packaging
- 2) Unbolt the mounting plate from chuck



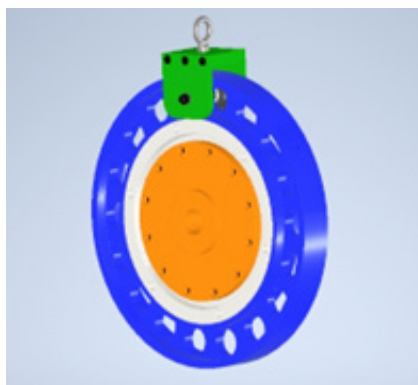
- 3) Install mounting plate onto spindle of machine
- 4) Set the chuck body into 1" riser blocks with front facing up



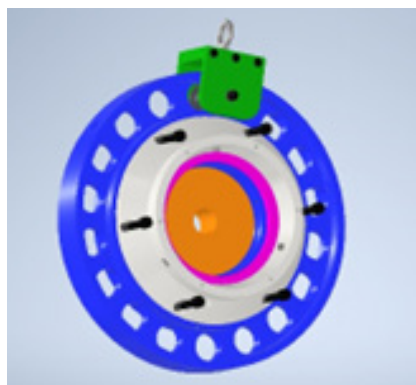
- 5) Install tool over chuck body until it is resting on riser blocks



- 6) Align notches on ring with taped holes on chuck body
- 7) Install 3 screws thru ring into chuck body
- 8) With a hoist connected to the top eyebolt lift the chuck and tool up



- 9) Align the threaded clamp sleeve with the drawtube
- 10) Turn ring to thread the chuck assembly onto the drawbar
- 11) Bolt the chuck to the mounting plate



- 12) Remove 3 screws from ring and chuck body
- 13) Slide the tool off from chuck body